

NOTE:

– ALL OPENINGS WITHIN 3 METERS OF THE SIDE BOUNDARY ARE TO BE PROTECTED IN ACCORDANCE TO BCA CLAUSE C3.4.

– IDENTIFY EACH DOOR REQUIRED BY CLAUSE E4.5 TO BE PROVIDED WITH AN EXIT SIGN AND STATE "EXIT" AND "LEVEL" FOLLOWED BY THE FLOOR NUMBER.

– SIGNAGE IN ACCORDANCE WITH AS1428.1 MUST BE PROVIDED FOR ACCESSIBLE UNISEX SANITARY FACILITIES TO IDENTIFY LEFT OR RIGHT HANDED USE

– TGSi's IN ACCORDANCE TO AS1428.4.1–2009 ARE TO BE PROVIDED TO:

- ANY OVERHEAD OBSTRUCTION LESS THAN 2m ABOVE FLOOR
- TOP AND BOTTOM OF ALL STAIRWAYS AND RAMP (EXCEPT FIRE-ISOLATED STAIRWAYS)
- WHERE AN ACCESSWAY MEETS A VEHICULAR WAY ADJACENT TO ANY PEDESTRIAN ENTRANCE TO A BUILDING

D3.12 GLAZING ON AN ACCESSWAY

– ANY SUCH GLAZING ON AN ACCESSWAY MUST BE CLEARLY MARKED IN ACCORDANCE WITH AS1428.1–2009

E3.6 PASSENGER LIFTS

(I) HANDRAIL COMPLYING WITH THE MANDATORY HANDRAIL PROVISIONS OF AS1735.12,

(II) LIFT FLOOR DIMENSIONS NOT LESS THAN 1,400MM X 1,600MM AS THE LIFT VERTICAL TRAVELS ARE GREATER THAN 12M,

(III) MINIMUM CLEAR DOOR OPENING COMPLYING WITH AS1735.12,

(IV) PASSENGER PROTECTION SYSTEM COMPLYING WITH AS1735.12,

(V) LIFT LANDING DOORS AT THE UPPER LANDING,

(VI) LIFT CAR AND LANDING CONTROL BUTTONS COMPLYING WITH AS1735.12,

(VII) LIGHTING IN ACCORDANCE WITH AS1735.12,

(VIII) LIFTS SERVING MORE THAN 2 LEVELS -

- AUTOMATIC AUDIBLE INFORMATION WITHIN THE LIFT CAR TO INDICATE THE LEVEL EACH TIME THE LIFT CAR STOPS;

- AUDIBLE AND VISUAL INDICATION AT EACH LIFT LANDING TO INDICATE THE ARRIVAL OF THE LIFT CAR;

- AUDIBLE INFORMATION AND AUDIBLE INDICATION IS TO BE PROVIDED IN A RANGE OF BETWEEN 20-80dB(A) AT A MAXIMUM FREQUENCY OF 1500HZ;

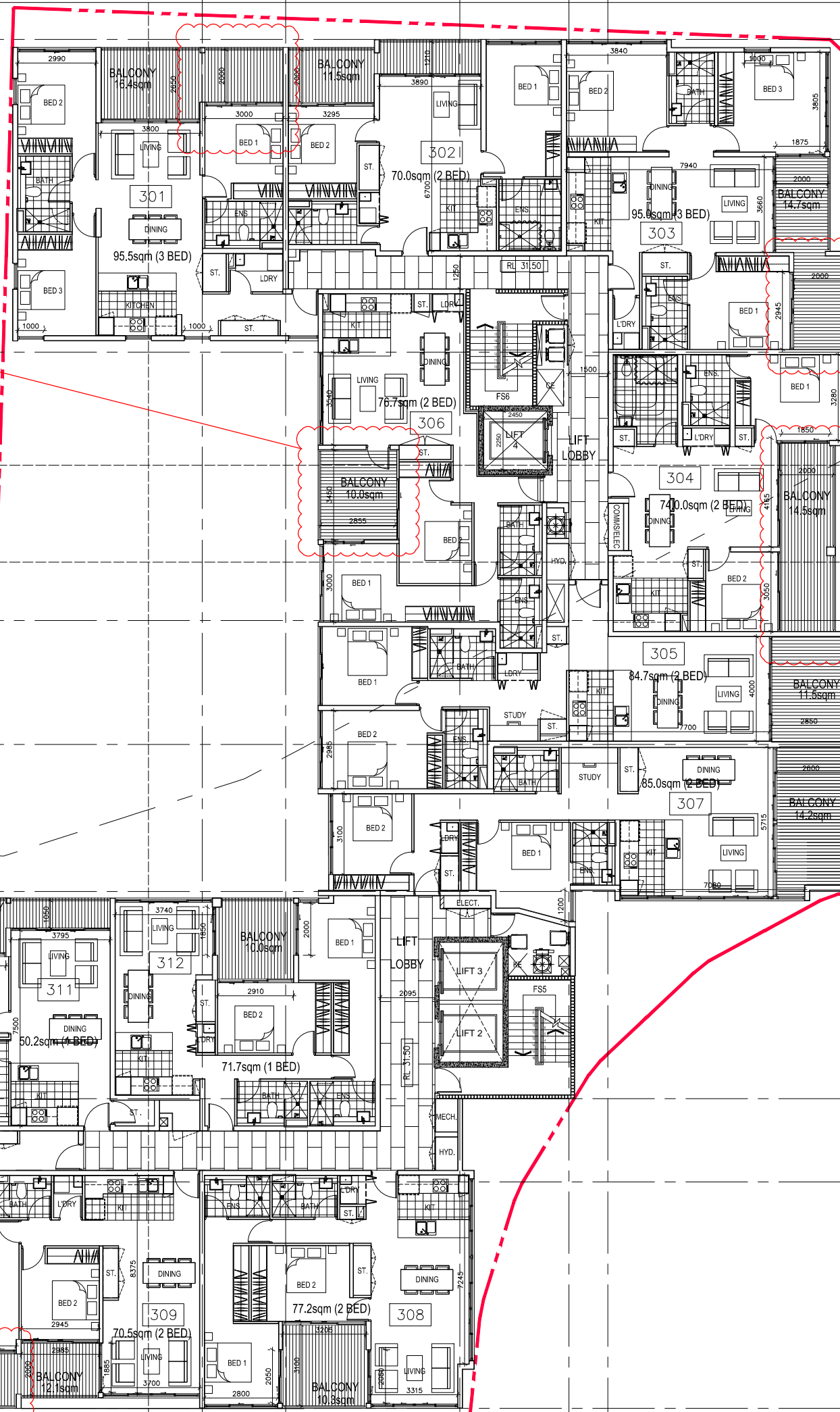
(IX) EMERGENCY HANDS-FREE COMMUNICATION, INCLUDING A BUTTON THAT ALERTS A CALL CENTRE OF A PROBLEM AND A LIGHT TO SIGNAL THAT THE CALL HAS BEEN RECEIVED.

THE LIFT SHALL BE DETAIL DESIGNED TO ENSURE COMPLIANCE WITH THE ABOVE AND AS1428.1 AS APPLICABLE

F2.4 ACCESSIBLE SANITARY FACILITIES TO BE COMPLIANCE TO AS1428.1-2009

ALL OPENINGS WITHIN 3 METRES OF THE SOUTHERN BOUNDARY ARE TO BE PROTECTED IN ACCORDANCE TO BCA CLAUSE C3.4.

BALCONY DEPTH INCREASED TO ≥2 METERS IN DEPTH. (AS SHOWN IN CLOUDED AREAS)



| Rev. | Description | Date |
|------|--------------------|----------|
| A | DA SUBMISSION | 03.10.14 |
| B | DA RE-SUBMISSION | 27.04.15 |
| C | DA ADDITIONAL INFO | 25.08.15 |
| D | DA ADDITIONAL INFO | 09.10.15 |
| E | DA INFO VIA EMAIL | 28.10.15 |

DISCLAIMER
"THESE DRAWINGS ARE PRELIMINARY DRAWINGS AND ARE SUBJECT TO CHANGE WITHOUT NOTICE DURING THE COURSE OF THE PROPOSED DEVELOPMENT AND IN CONSULTATION WITH COUNCIL. SUBMISSION OF THE DRAWINGS DOES NOT CONSTITUTE A REPRESENTATION OR WARRANTY BY THE DEVELOPER OR ITS SERVANTS, AGENTS OR CONTRACTORS THAT THE DRAWINGS ARE FINAL NOR THAT THE PROPOSED DEVELOPMENT WILL TAKE PLACE IN ACCORDANCE WITH THESE DRAWINGS."
BEFORE CARRYING OUT ANY WORK ENSURE THAT THE DRAWINGS USED CARRY THE LATEST AMENDMENT NO.

NOTES:
DRAWINGS MADE TO A LARGER SCALE AND THOSE SHOWING PARTICULAR DETAIL OF WORKS SHALL HAVE PRECEDENCE OVER DRAWINGS MADE TO A SMALLER SCALE AND FOR MORE GENERAL PURPOSES.
WHERE ANY DISCREPANCY EXISTS BETWEEN FIGURED AND SCALE DIMENSIONS, THE FIGURED DIMENSIONS SHALL PREVAIL.
BUILDER TO CHECK ALL SITE DIMENSIONS PRIOR TO FABRICATION OF FITMENTS

THESE DOCUMENTS AND ANY WORKS EXECUTED AS A RESULT OF THESE DOCUMENTS SHALL BE SUBJECT TO THE COPYRIGHT CONDITIONS SET OUT IN THE CONDITIONS OF ENGAGEMENT.

TONY OWEN PARTNERS
FOR DA SUBMISSION
OCTOBER 2014

Consultants

Client

Architects



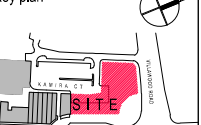
Project:

VILLAWOOD

Project address:

1 Villawood Place, Villawood

Key plan



Scale:

1:100 @ A1

Date:

OCT 2015

Drawing title:

LEVEL 3 PLAN

Project no. 923 Dwg #. A106

Drawn: DC

Drawing status:

DA - ADDITIONAL INFORMATION